



LION BRAND YARN

*...famous for quality since 1878*

## Cable: Hugs and Kisses

[<< Previous Page](#)

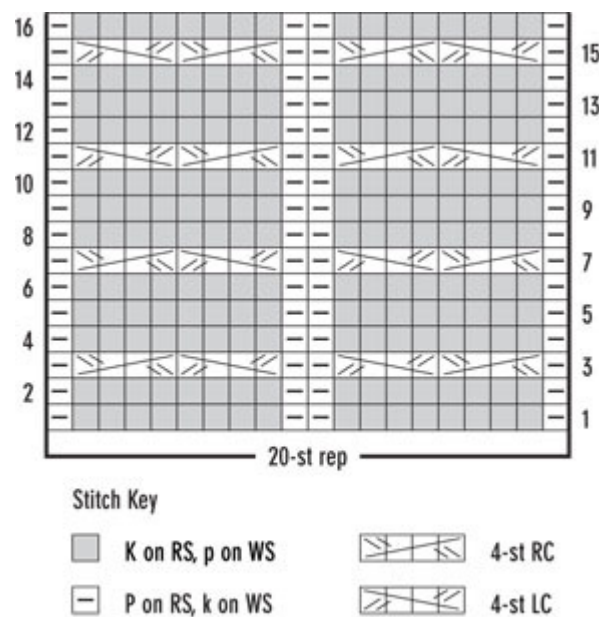
[Click here to zoom](#)

(multiple of 20 sts)

**Stitch Explanation** **4-st RC** Sl 2 sts to cn and hold to back, k2, k2 from cn. **4-st LC** Sl 2 sts to cn and hold to front, k2, k2 from cn.

**Pattern:** **Rows 1, 5, 9 and 13** \*P1, k8, p1; rep from \* to end. **Row 2 and all WS rows** \*K1, p8, k1; rep from \* to end. **Rows 3 and 7** \*P1, 4-st RC, 4-st LC, p2, 4-st LC, 4-st RC, p1; rep from \* to end. **Rows 11 and 15** \*P1, 4-st LC, 4-st RC, p2, 4-st RC, 4-st LC, p1; rep from \* to end. **Row 16** Rep row 2. Rep rows 1–16.

Note: this is a generic pattern for creating this cable. For a single cable it would be 20 stitches. In the example shown, there are 2 repeats of the stitch, so you'd need to cast on 40 (20 x 2) stitches and do 2 repeats to get a swatch that appears the same.



**ABBREVIATIONS / REFERENCES** [Click for explanation and illustration](#)

cn = cable needle

sl = slip

k = knit

rep = repeat(s)(ing)

k2tog = knit 2 together

RS = right side

p = purl

WS = wrong side

st(s) = stitch(es)

Still need help? Click [here](#) to contact us!

Copyright ©1998-2007 Lion Brand Yarn Company, all rights reserved. No pattern or other material may be reproduced -- mechanically, electronically, or by any other means, including photocopying -- without written permission of Lion Brand Yarn Company. If you would like to send a copy of this page to someone, click [here](#) and we will be happy to do it for you.